

AVC **VNN41AVLT**

QUICK START GUIDE

4MP WATER-PROOF DOME NETWORK CAMERA

TABLE OF CONTENTS

- Warning and Caution..... 1
- Package Content..... 2
- Overview..... 3
- Overview: Connecting Network Cable 4
- Installation 5
- Network Connection..... 9

- Please read this instruction carefully before operating the unit and keep it for further reference.
- All the examples and pictures used here are for reference only.
- The contents of this manual are subject to change without notice.

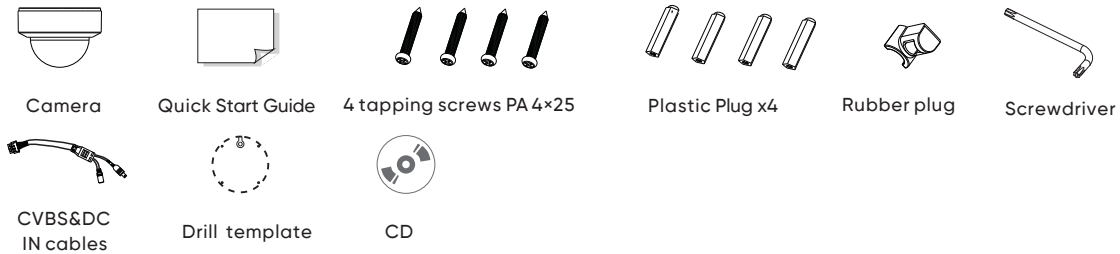
Warning and Caution

- If the product does not work properly, please contact your dealer or the nearest service center. Never attempt to disassemble the camera yourself. (We shall not be responsible for any problems caused by unauthorized repair or maintenance.)
- Do not allow water or liquid intrusion into the camera.
- In the use of the product, you must be strict compliance with the electrical safety regulations of the nation and region. When the product is mounted on wall or ceiling, the device shall be firmly fixed.
- Do not use camera beyond specified voltage range.
- Do not drop the camera or subject it to physical shock.
- Avoid touching the camera lens.
- If cleaning is necessary, please use clean cloth to wipe it gently.
- Do not aim the camera at the sun or extra bright place.
- Do not place the camera in extremely hot, cold (the operating temperature shall be $-30^{\circ}\text{C}\sim 60^{\circ}\text{C}$), dusty or damp locations, and do not expose it to high electromagnetic radiation.
- To avoid heat accumulation, good ventilation is required for operating environment.

Thank you for purchasing this AVYCON IP Network Camera. This guide provides basic instructions on installing and accessing this IP Network Camera. For more details, please refer to the User Manual.

Package Contents

AVC-VNN41AVLT



	ITEMS	QUANTITY	DESCRIPTION
DEFAULT	Avycon Network Camera	1 Pc	The purchased model
	Quick Start Guide	1 Pc	Printed material
	Tapping Screws	4 Pc	Materials
	Plastic Plug	4 Pc	Material
	Rubber Plug	1 Pc	Material
	Screwdriver	1 Pc	Material
	CVBS & DC IN Cables	1 Pc	Material
	Drill Template	1 Pc	Material
	CD	1 Pc	Printed Material

Caution

- * Do not expose the product to rain moisture
- * Make sure the device is firmly fixed when mounting it on the wall or ceiling
- * Make sure that the power supply voltage is correct before using the camera
- * Do not use a 3rd party Power Adapter
- * Never attempt to disassemble or modify the camera

System Requirements

OPERATING SYSTEM: Windows XP / Vista / 7 / 8 /10 / Server 2000 / Server 2008

CPU: 1.66 Ghz or Higher

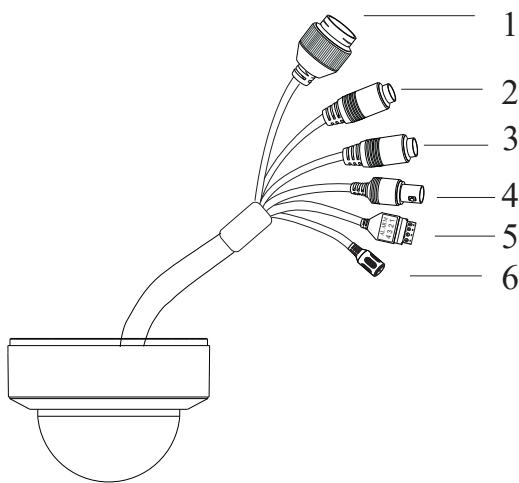
RAM: 1G or Higher

Graphic Memory: 128MB or more

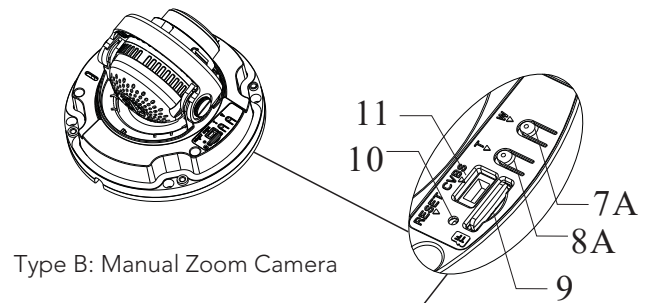
Internet Protocol: TCP / IP (IPv4 / IPv6)

Overview

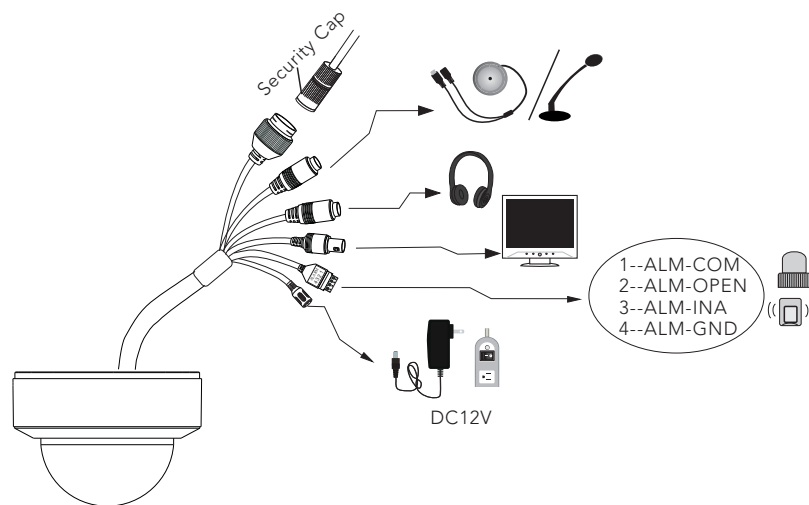
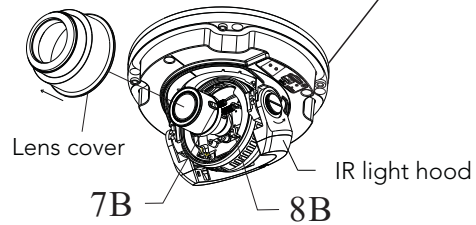
AVC-VNN41AVLT



Type A: Motorized Zoom Camera



Type B: Manual Zoom Camera



1	Ethernet Connector	8A	Zoom+ (only available for type A)
2	Audio Input (MIC)	7B	Focus
3	Audio Output (HP)	8B	Zoom
4	CVBS Video Output	9	Micro SD Card Slot
5	Alarm Input/Output	10	Reset
6	DC12V Power Connector	11	DC IN & CVBS Interface
7A	Zoom- (only available for type A)		
8A	Zoom+ (only available for type A)		

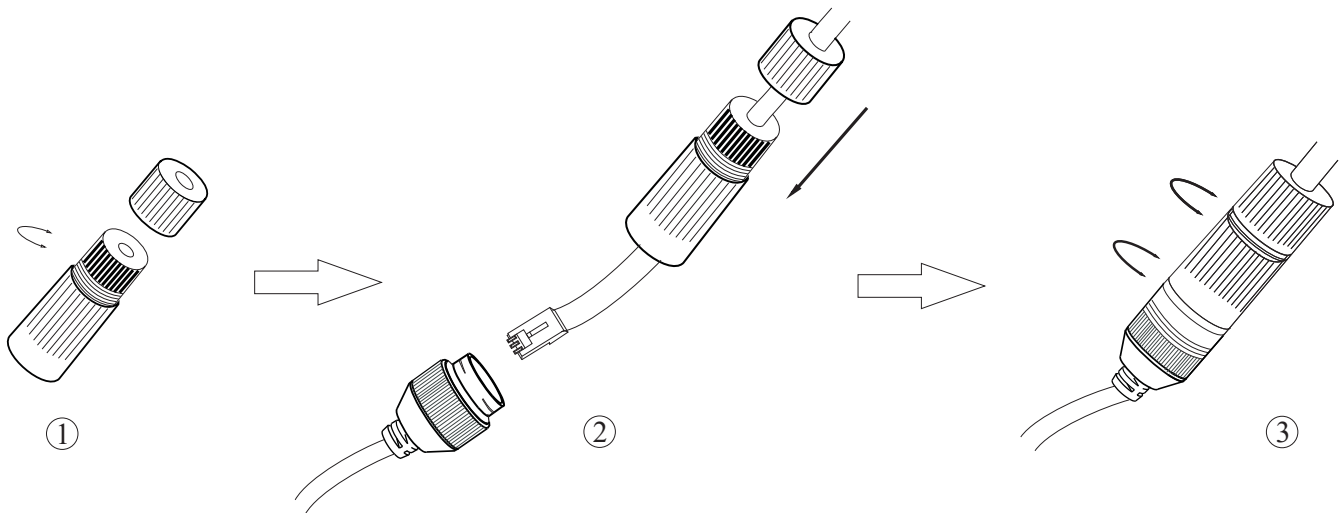
- * If the PoE switch is used to power the camera, DC12V power supply is not required.
- * It is recommended to install the security cap for outdoor installation.

Alarm Connection

Alarm Input: Join the grounding ends of the sensor and the camera and then connect the signal cable of the sensor to the alarm input port (ALM-INA) of the camera.

Alarm Output: Loosen the screws in the alarm output port. Then insert the signal wires of the alarm output devices into the port of OPEN and COM separately. Finally tighten the screws. Some of the external alarm output devices need the power supply.

Connecting Network Cable



Step 1: Loosen the nut from the main element.

Step 2: Run the network cable (without RJ 45 connector) through the both elements. Then crimp the cable with RJ 45 connector.

Step 3: Connect the cable to the hermetic connector. Then tighten the nut and the main cover.

Installation

AVC-VNN41AVLT

- * Please make sure that the wall or ceiling is strong enough to withstand 3times the weight of the camera.
- * Please install the camera in the dry environment. You'd better install back the lower dome less than 4 hours after removing it.
- * Do not remove the protection film until finishing the installation.

Install Camera

Step 1: Rotate the trim ring anticlockwise to remove it from the camera.

Step 2: Attach the drill template to the place where you want to fix the camera and then drill 4 screw holes and 1 cable hole (if you want to route the cables through the ceiling) according to the drill template.

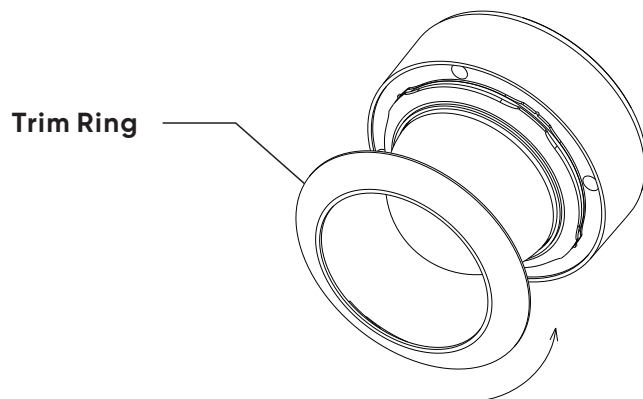


Figure 1

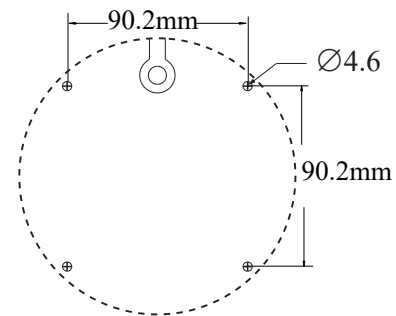
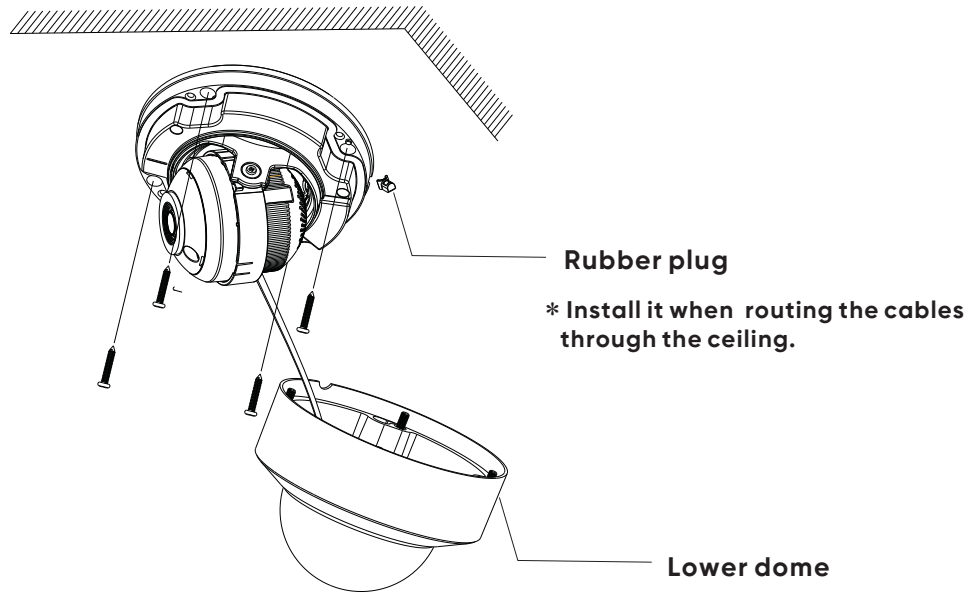


Figure 2

Step 3: Loosen the screws to open the lower dome.

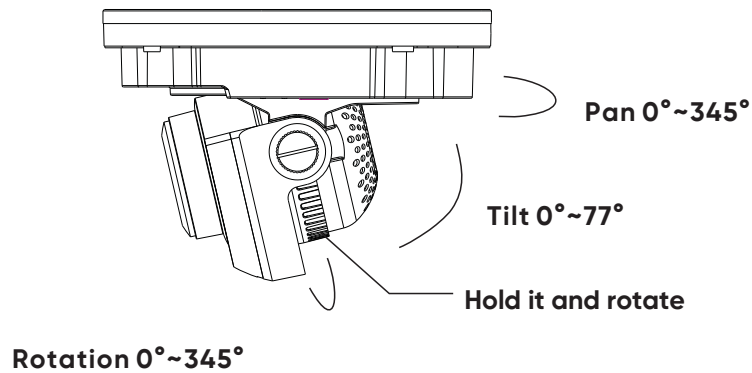
Step 4: Route and connect these cables. Then secure the camera to the ceiling or wall with the screws provided.

Figure 3



Step 5: Three-axis adjustment. Before adjustment, preview the image of the camera on a monitor (See Figure 5) and then adjust the camera according to the figure below to get an optimum angle.

Figure 4



Step 6: Insert a micro SD card. After that, adjust Zoom or Focus to obtain an optimum image. Before adjustment, view the image of the camera on a monitor. For Type A, press the T or W button.

For Type B,

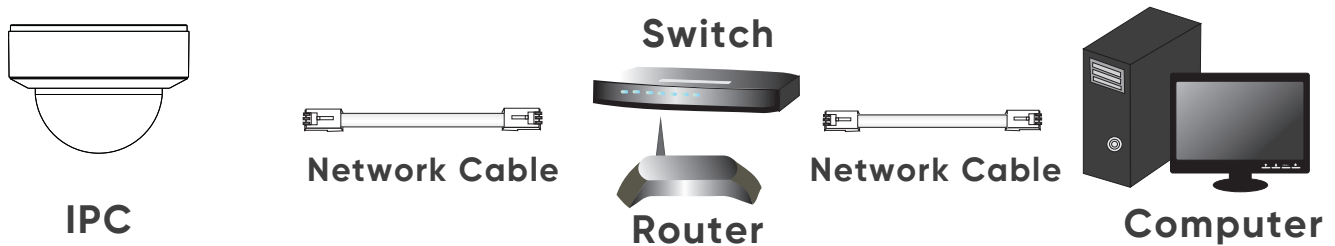
- * (a) push the IR light hood to the position as shown in Figure 6;
- * (b) remove the lens cover;
- * (c) adjust the Zoom and Focus; (d) install back the lens cover and move the IR light hood back.

Network Connection

AVC-VNN41AVLT

Here we take accessing IP camera via LAN for example.

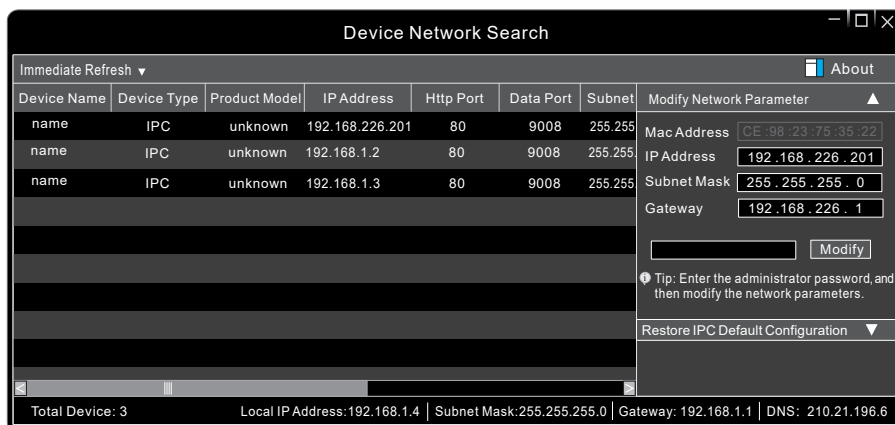
Access through IP-Tool



Step 1: Make sure that the camera and the PC are well connected via LAN.

Step 2: Find the IP-Tool from the CD and then install it in the computer.

After that, run the IP-Tool as shown below.



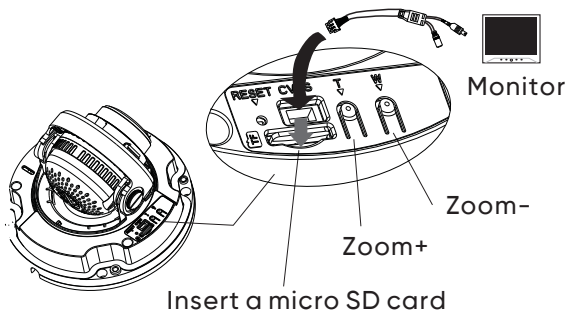
Step 3: Double click the camera information listed in the IP-Tool to open the web browser.

Or manually enter the default IP address in the address bar of your browser.

The default IP address of this camera is **192.168.226.201**. Then follow directions to download and install the plugin if prompted.

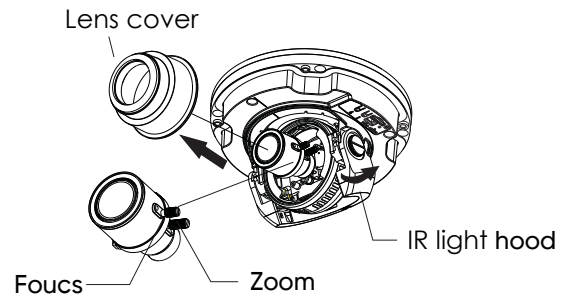
Step 4: Activate and log in the camera. The default username is **admin**; the default password is **123456** or you need to self-define the password. Please operate according to the actual situation.

Figure 5



(Type A: Motorized zoom camera)

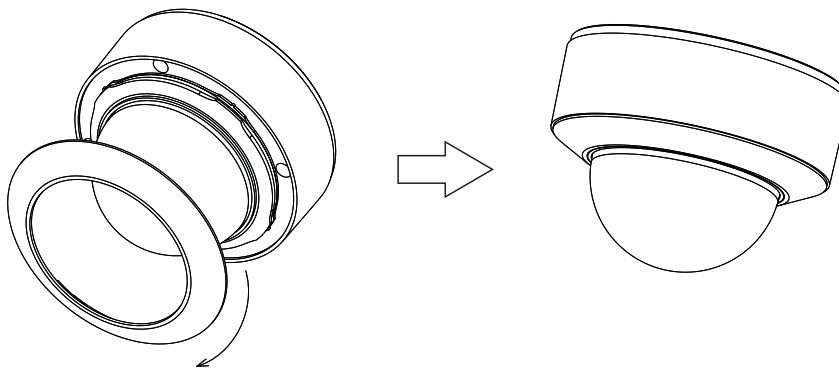
Figure 6



(Type B: Manual zoom camera)

Step 7: Install the lower dome back to the camera and fix it with screws. Then put the trim ring onto the lower dome and then rotate it clockwise until it is locked. Finally, remove the protection film softly.

Figure 7

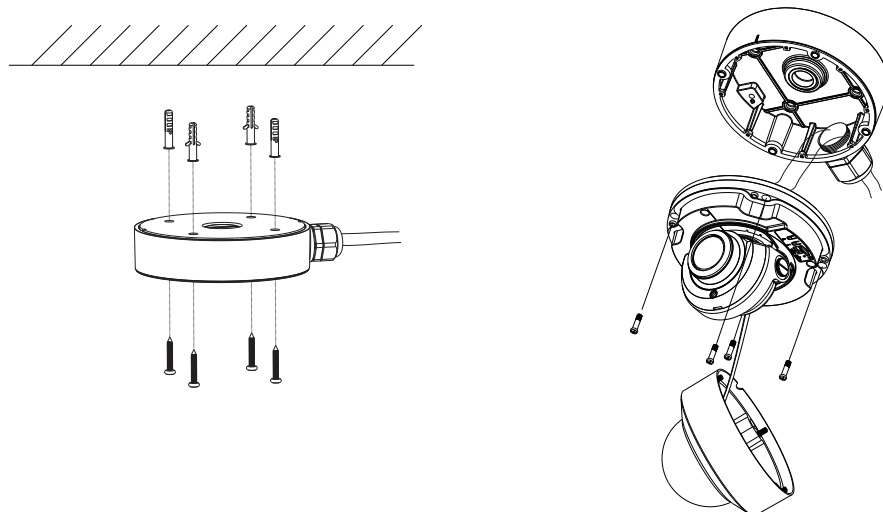


Install Camera with Junction Box

Step 1: Fix the junction box to the wall with screws.

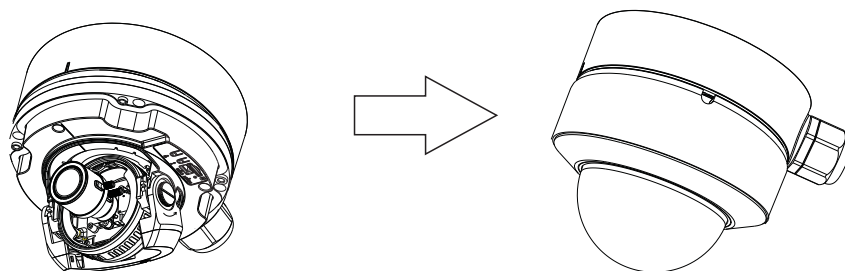
Step 2: Rotate the trim ring anticlockwise to remove it from the camera and then loosen the screws to open the lower dome (See Figure 1 and 3).

Step 3: Route and connect these cables (take side conduit cabling for example). Then fasten the camera to the junction box with screws.



Step 4: Insert a micro SD card. Then adjust the view of angle and the image (See Figure 4, 5 and 6).

Step 5: Install the lower dome back to the camera and fix it with screws. Then put the trim ring onto the lower dome and then rotate it clockwise until it is locked. Finally, remove the protection film softly. (See Figure 7)



TIPS

Transparent Dome Maintenance

Transparent dome is an optical element which is made of plastics. As dirt, dust or fingerprints on the dome will reduce the clarity of the image, please keep it clean in the course of installing or using but do not directly touch or wipe it. If there is any dirt or dust, please follow these cleaning tips to clean your dome camera.

- * If there is dust on the dome, please use a dry soft brush to gently brush it.
- * If there is water or grease on the dome, please gently wipe off the water or grease with a soft cloth. Then use another clean cloth with a little neutral detergent to wipe it several times until it is clean. Finally, dry it with a soft cloth.
- * If there are fingerprints on the dome, please use a clean cotton cloth or lens cleaning wipe with a little neutral detergent to wipe it several times and then dry it with a soft cloth.



AVYCON[®]



AVYCON[®]

Copyright © AVYCON. All rights reserved. Specifications and pricing are subject to change without notice.

phone: 949-752-7606
email: info@avycon.com
social: [@avycon_aivo](#)
website: avycon.com